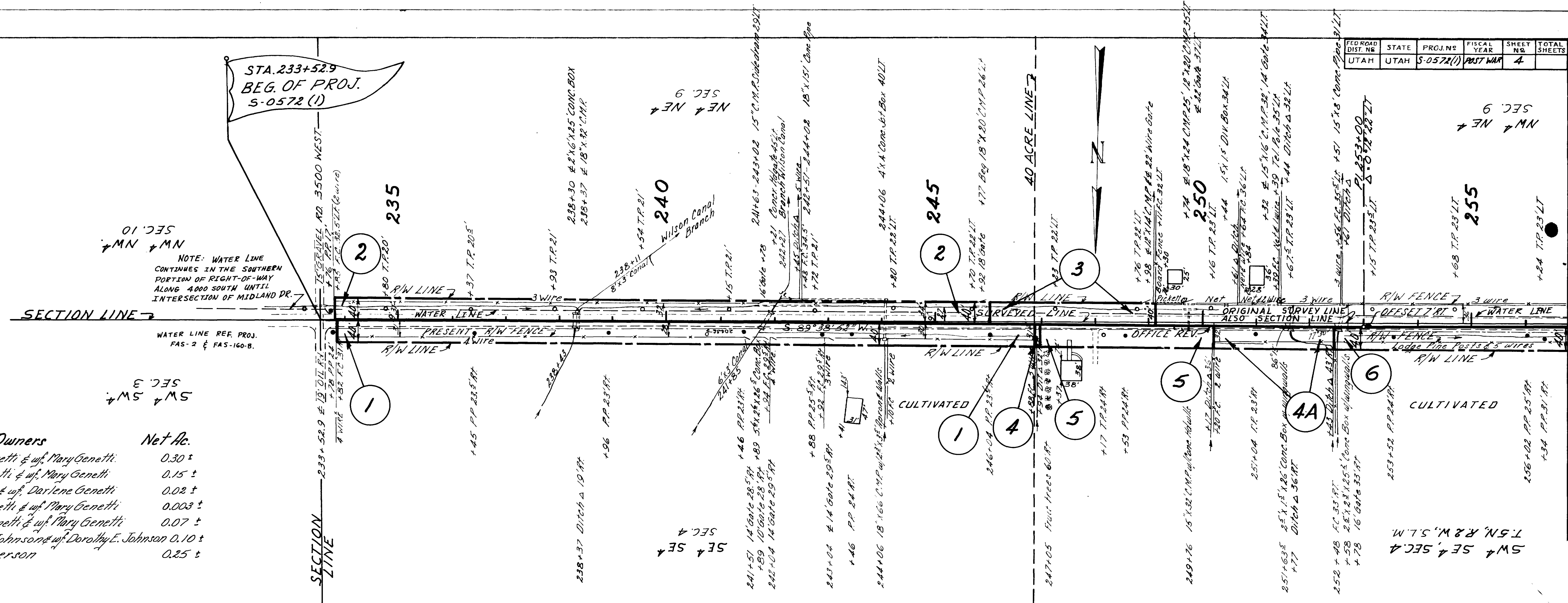


| | | |
|-----------|--------------------|------|
| PLAN | SURVEYED | DATE |
| NOTE BOOK | PLOTTED | |
| NO | ALIGNMENT CHECKED | |
| | RT. OF WAY CHECKED | |

| Parcel No | Owners | Net Ac. |
|-----------|--|---------|
| 1 | Dominic Genetti & wf. Mary Genetti. | 0.30 ± |
| 2 | Dominic Genetti & wf. Mary Genetti | 0.15 ± |
| 3 | Guy Genetti & wf. Darlene Genetti | 0.02 ± |
| 4 | Dominic Genetti & wf. Mary Genetti | 0.003 ± |
| 4A | Dominic Genetti & wf. Mary Genetti | 0.07 ± |
| 5 | Harold R. Johnson & wf. Dorothy E. Johnson | 0.10 ± |
| 6 | Emily Peterson | 0.25 ± |



| | | | | | |
|-------------------|-------|-----------|-------------|----------|--------------|
| FED ROAD DIST. NO | STATE | PROJ. NO | FISCAL YEAR | SHEET NO | TOTAL SHEETS |
| UTAH | UTAH | S-0572(1) | PAST WAR | 4 | |

SW 4 SE 4 SEC 4
T.5N, R.2W, S.1M.

SW 4 SE 3
SEC 3

NM 4 NE 4
SEC 10

NM 4 NE 4
SEC 9

SW 4 SE 4
PP 25.5 RT
+34 PP 31 RT

255
+68 T.P. 23 LT

PI 253+00
Δ 0.072 22 LT
+15 T.P. 23 LT

252 + 48 FC 33 RT
+ 58 2.5'x2.5'x25.5' Conc Box w/ wingwall's
+ 78 16' Gate 33 RT

251 + 63.5 2.5'x1.5'x26' Conc. Box w/ wingwall's
+ 77 Ditch Δ 36 RT

251 + 04 T.P. 23 RT
86°

249 + 76 15'x32' C.M.P. w/ Conc. Hoop
+ 17 Ditch Δ 35
+ 20 FC 2 WIRE

249 + 76 15'x24' C.M.P. 25', 18'x20' C.M.P. 35 LT
+ 22 Gate 57 LT

+ 76 T.P. 22 LT
+ 98 18'x18' C.M.P. 18' Wire Gate
Board Fence + 11 FC 59 LT

+ 44 15'x15' DIV Box 34 LT
+ 16 T.P. 23 LT

247 + 05 Fruit Trees 60 RT
+ 17 T.P. 24 RT
+ 53 PP 24 RT

246 + 04 PP 23 RT
+ 17 T.P. 24 RT

244 + 06 18'x166' C.M.P. w/ 2.5'x2.5' Apron Walls
+ 10 FC 2 WIRE

244 + 06 4'x4' Conc. Box 40 LT
+ 80 T.P. 22 LT

243 + 04 14' Gate 29.5 RT
+ 41 143'
+ 92 FC 29.5 RT
+ 88 PP 25.5 RT

241 + 51 14' Gate 28.5 RT
+ 89 10' Gate 28 RT
+ 89 10' Gate 28 RT
+ 89 10' Gate 28 RT
+ 89 10' Gate 28 RT

241 + 51 14' Gate 28.5 RT
+ 89 10' Gate 28 RT
+ 89 10' Gate 28 RT
+ 89 10' Gate 28 RT

241 + 51 14' Gate 28.5 RT
+ 89 10' Gate 28 RT
+ 89 10' Gate 28 RT
+ 89 10' Gate 28 RT

241 + 51 14' Gate 28.5 RT
+ 89 10' Gate 28 RT
+ 89 10' Gate 28 RT
+ 89 10' Gate 28 RT

241 + 51 14' Gate 28.5 RT
+ 89 10' Gate 28 RT
+ 89 10' Gate 28 RT
+ 89 10' Gate 28 RT

241 + 51 14' Gate 28.5 RT
+ 89 10' Gate 28 RT
+ 89 10' Gate 28 RT
+ 89 10' Gate 28 RT

241 + 51 14' Gate 28.5 RT
+ 89 10' Gate 28 RT
+ 89 10' Gate 28 RT
+ 89 10' Gate 28 RT

241 + 51 14' Gate 28.5 RT
+ 89 10' Gate 28 RT
+ 89 10' Gate 28 RT
+ 89 10' Gate 28 RT

241 + 51 14' Gate 28.5 RT
+ 89 10' Gate 28 RT
+ 89 10' Gate 28 RT
+ 89 10' Gate 28 RT

241 + 51 14' Gate 28.5 RT
+ 89 10' Gate 28 RT
+ 89 10' Gate 28 RT
+ 89 10' Gate 28 RT

241 + 51 14' Gate 28.5 RT
+ 89 10' Gate 28 RT
+ 89 10' Gate 28 RT
+ 89 10' Gate 28 RT

241 + 51 14' Gate 28.5 RT
+ 89 10' Gate 28 RT
+ 89 10' Gate 28 RT
+ 89 10' Gate 28 RT

241 + 51 14' Gate 28.5 RT
+ 89 10' Gate 28 RT
+ 89 10' Gate 28 RT
+ 89 10' Gate 28 RT

241 + 51 14' Gate 28.5 RT
+ 89 10' Gate 28 RT
+ 89 10' Gate 28 RT
+ 89 10' Gate 28 RT

241 + 51 14' Gate 28.5 RT
+ 89 10' Gate 28 RT
+ 89 10' Gate 28 RT
+ 89 10' Gate 28 RT

241 + 51 14' Gate 28.5 RT
+ 89 10' Gate 28 RT
+ 89 10' Gate 28 RT
+ 89 10' Gate 28 RT

241 + 51 14' Gate 28.5 RT
+ 89 10' Gate 28 RT
+ 89 10' Gate 28 RT
+ 89 10' Gate 28 RT

241 + 51 14' Gate 28.5 RT
+ 89 10' Gate 28 RT
+ 89 10' Gate 28 RT
+ 89 10' Gate 28 RT

241 + 51 14' Gate 28.5 RT
+ 89 10' Gate 28 RT
+ 89 10' Gate 28 RT
+ 89 10' Gate 28 RT

241 + 51 14' Gate 28.5 RT
+ 89 10' Gate 28 RT
+ 89 10' Gate 28 RT
+ 89 10' Gate 28 RT

241 + 51 14' Gate 28.5 RT
+ 89 10' Gate 28 RT
+ 89 10' Gate 28 RT
+ 89 10' Gate 28 RT

241 + 51 14' Gate 28.5 RT
+ 89 10' Gate 28 RT
+ 89 10' Gate 28 RT
+ 89 10' Gate 28 RT

241 + 51 14' Gate 28.5 RT
+ 89 10' Gate 28 RT
+ 89 10' Gate 28 RT
+ 89 10' Gate 28 RT

241 + 51 14' Gate 28.5 RT
+ 89 10' Gate 28 RT
+ 89 10' Gate 28 RT
+ 89 10' Gate 28 RT

241 + 51 14' Gate 28.5 RT
+ 89 10' Gate 28 RT
+ 89 10' Gate 28 RT
+ 89 10' Gate 28 RT

241 + 51 14' Gate 28.5 RT
+ 89 10' Gate 28 RT
+ 89 10' Gate 28 RT
+ 89 10' Gate 28 RT

241 + 51 14' Gate 28.5 RT
+ 89 10' Gate 28 RT
+ 89 10' Gate 28 RT
+ 89 10' Gate 28 RT

241 + 51 14' Gate 28.5 RT
+ 89 10' Gate 28 RT
+ 89 10' Gate 28 RT
+ 89 10' Gate 28 RT

241 + 51 14' Gate 28.5 RT
+ 89 10' Gate 28 RT
+ 89 10' Gate 28 RT
+ 89 10' Gate 28 RT

241 + 51 14' Gate 28.5 RT
+ 89 10' Gate 28 RT
+ 89 10' Gate 28 RT
+ 89 10' Gate 28 RT

241 + 51 14' Gate 28.5 RT
+ 89 10' Gate 28 RT
+ 89 10' Gate 28 RT
+ 89 10' Gate 28 RT